

## How to check for leaks?

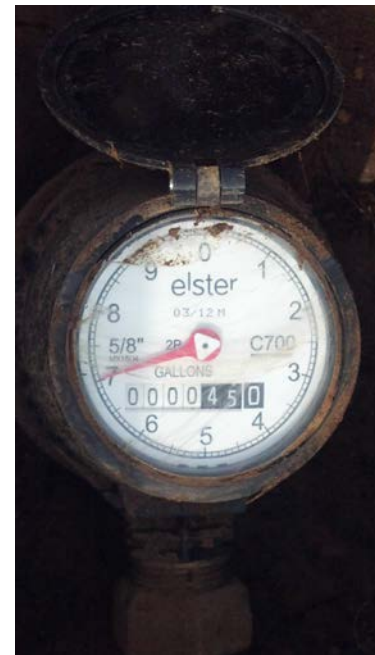
To help you determine if you have a leak, by checking your water meter for unexplained usage.

Step 1: Find your meter box. Your meter box is typically located in the front of your property near the street. It may be made of concrete or plastic and could have a cast iron, plastic or concrete lid. Our operators also sometimes paint the lid blue to make it stand out better.



Step 2: Carefully remove the lid.

Step 3: Once you open the meter box lid, you will need to look for the dial in the center of the meter. In the photos below there are several examples of various meters. In the left hand and upper middle meter the dial that you are looking for is left of the center of the meter. In the lower middle and right hand the dial is in the center of the meter. What you are looking for is to see if this dial is spinning (that would indicate water is going through the meter). If you have all water faucets turned off and no one else is using water at your residence and the dial is spinning then this would indicate that you have a leak somewhere on your property. To prevent further water loss and an increase in your water bill we would recommend you turn your water off until you are able to locate and repair the leak



If you need further assistance please call our office at (903) 566-1320 or email [office@jacksonwatersupply.com](mailto:office@jacksonwatersupply.com)